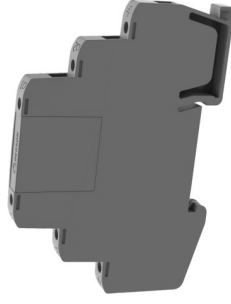


## Surge Protector for Measurement and Control system

- Whole Module
- Low residual voltage
- Long service life
- Compact and ultra-thin design
- 35mm DIN rail module

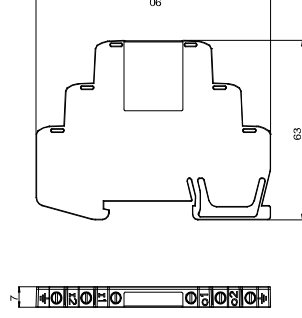


☆ Suitable for full-mode protection in high-frequency transmission systems, typically installed in lightning protection zone LPZ0,-2 and subsequent zones.

Articles	DSPT-MCR-LF-24V	RoHS, UL 94 V-0, TUV, CE, UL 1449
Order Number	30070000150	
<b>Electrical Parameters</b>		
Nominal Voltage (U <sub>n</sub> )	24V	
Maximum Continuous DC Operating Voltage (U <sub>c</sub> )	33V	
Maximum Continuous AC Operating Voltage (U <sub>e</sub> )	23.3V	
Nominal Load Current (45°C)(I <sub>n</sub> )	1.0A	
D1 Line-to-Line Impulse discharge Current (10/350μs)(I <sub>imp</sub> )	1kA	
C2 Line-to-Line Nominal Discharge Current (8/20μs)(I <sub>n</sub> )	5kA	
C2 Total Nominal Discharge Current (8/20μs)(I <sub>n</sub> )	10kA	
Voltage Protection Level (1kV/μsC3)(U <sub>1</sub> )	65V(L-to-L),65V(L-to-PE)	
Voltage Protection Level (1kV/μsC3)(U <sub>2</sub> )	47V(L-to-L),47V(L-to-PE)	
Line Series Impedance	1.0ohm	
Capacitance	≤25pF(L-to-L),≤25pF(L-to-PE)	
L-PE Cutoff Frequency	100MHz	
<b>Connection Data</b>		
Maximum Wiring Area	Flexible Conductor (Soft Conductor): 25mm <sup>2</sup>	
Minimum Wiring Area	0.5mm <sup>2</sup>	
Stripping Length	5-7mm	
Screw Torque	0.3N.m	

<b>Dimensions</b>	
Length	90mm
Width	7mm
Height	63mm
<b>Material Specifications</b>	
Housing Material	Thermoplastic Material, UL94 V-0 compliant.
<b>Environmental Conditions</b>	
Installation Location	Indoor use only
Operating Temperature	-40°C...+85°C
Relative Humidity	≤95%(max 40°C)
Altitude	≤4km
Protection Class	IP20
<b>Standard Specifications</b>	
Testing Standards	IEC 61643-21 / EN 61643-21 / GBT 18802.21
Product Category	C2, D1
Number of Ports	2
Technology	GDT&TVS
<b>Installation</b>	
Installation Type	DIN Rail: 35mm

### Dimensional Drawing



### Circuit Diagram

